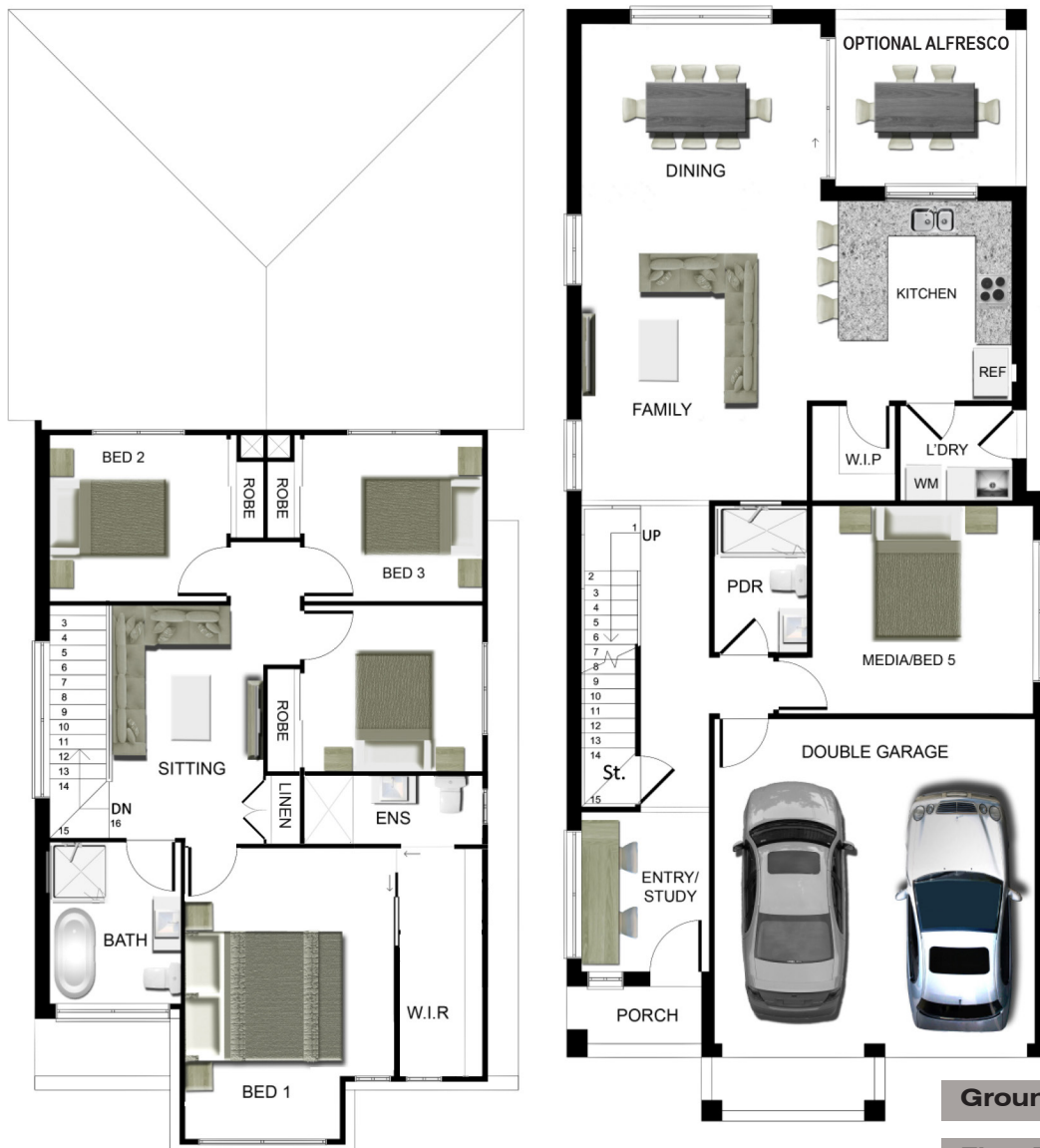


BALMAIN 24.5

10m Lot Width



Ground Floor

Family	5070 x 4370	Garage	5500 x 5430
Kitchen	3380 x 2920	Alfresco	3240 x 3000
Dining	4050 x 3000		
Bed 5/ Media	3740 x 3520		

First Floor

Bed 1	5000 x 3520
Bed 2	3000 x 2800
Bed 3	3000 x 2800
Bed 4	2980 x 2800

Ground Floor 96.63m²

First Floor 85.47m²

Garage 32.64m²

Porch 2.74m²

Total 217.48m²

Opt. Alfresco 9.72m²

Width 8.2m

Depth 18.8m

Dimensions and Floorplan shown based on Contemporary Facade

DISCLAIMER

Copyright Everyday Homes Pty Ltd. All rights reserved. All plans are copyright, no part may be used, reproduced or copied by any means or in any form without the prior permission of Everyday Homes Pty Ltd.

All measurements are in millimetres unless otherwise stated. Lot widths are based on base facade, and may vary depending on facade chosen. Due to estate and council requirements some lot widths will change. Show Home and marketing inclusions are for display purposes only and it is the clients responsibility to confirm working drawings and specifications. Face Brick Facade included in base house price and all applied external finishes are optional extras.

Everyday Homes reserves the right to amend, delete or change inclusions, specifications, suppliers and dimensions without prior notice or obligation.

Images are indicative only. Builders Licence Number: 32307



Everyday Homes
Live well in every way



1300 72 55 00
www.everydayhomes.com.au